

**BCM SCHOOL, CHANDIGARH ROAD, LUDHIANA**  
**A Senior Secondary School Of BCM Foundation**

**Affiliated To CBSE, New Delhi**

**Subject- English**

**WORKSHEET**

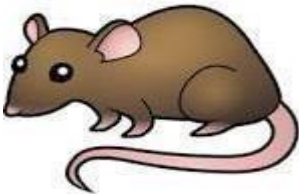
**Class - I**

**I Encircle the correct spellings.**

1. litele                  litle                  little
2. hed                    hid                    hidd
3. katch                catchh                catch
4. open                  opan                  oppen
5. saied                seid                  said

**II Who said this-**

1. I can catch you.



2. You can't catch me.



**III Make sentences.**

1. box - \_\_\_\_\_.

2. fat - \_\_\_\_\_.

3. big - \_\_\_\_\_.

4. mat - \_\_\_\_\_.

**IV Tick ( ✓ ) the correct answer.**

1. Who hid in a box?

- a) dog                      b) cat                      c) rat

2. Who sat on a mat?

- a) rat                      b) dog                      c) cat

**V Write rhyming words from the following passage.**

A fat cat sat on a mat. " I can catch you, little rat", said the cat. A little rat saw her, and hid in a hat. The cat ran to catch the rat. The rat ran and hid in a box. The lid of the box did not open.

1. \_\_\_\_\_

2. \_\_\_\_\_

3. \_\_\_\_\_